



UCMERCED FACILITIES MANAGEMENT

MINOR CAPITAL PROJECT WORKFLOW

UC Facilities Manual References

Minor Capital Project:

-Under \$35,000: No R&A Form Requirement
 -\$35,000-\$750,000: R&A Form Requirement (Including EIC & Project Schedule)

Major Capital Project:

-Above \$750,000: PPG Form Requirement (Including CIB, CEQA / EIS / EIR / EIC, Project Schedule, & Pro Forma)

Bidding and Construction Contract:

-Informal Bidding without Prequalification: \$50,000-\$300,000
 -Informal Bidding with Prequalification: \$300,000-\$640,000
 -Formal Bidding: Over \$640,000

-Construction Contract Forms: Long Form (Must Be Used in Formal Bidding), Mini Form / Brief form, JOC (Job Order Contract)

Builder's Risk Insurance Goes By Construction Cost:

Under \$200,000: Contractor's Builder's Risk
 \$200,000 or Over: UC Mandated Builder's Risk
 Current UC Builder's Risk: Willis Towers Watson

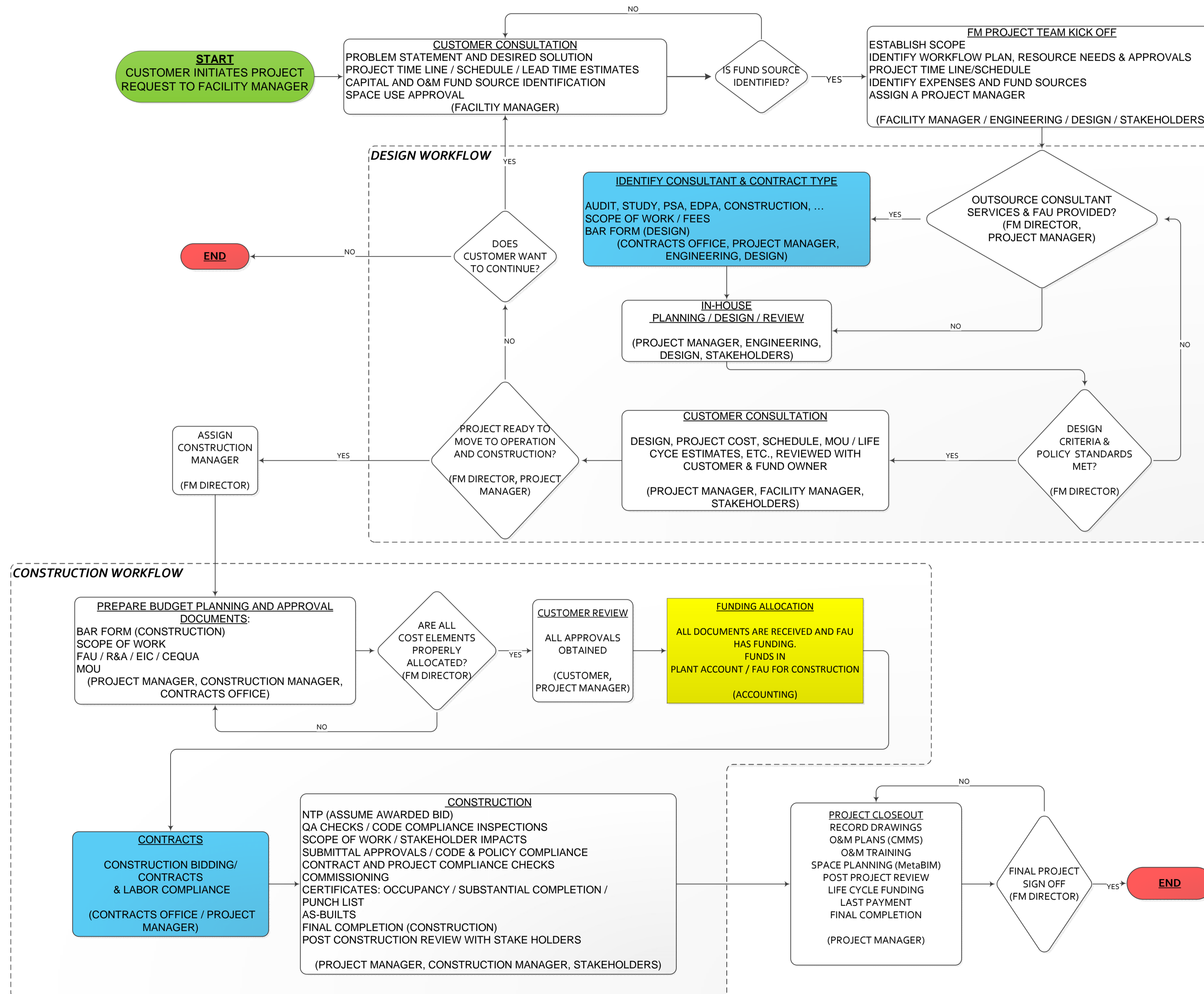
Bonding Requirements:

Payment Bond; projects over \$25,000
 Performance Bond; projects over \$50,000
 Bid Bond; projects over \$640,000

Design Agreements:

PSA: Professional Service Agreement
 EDPA: Executive Design Professional Agreement;
 Request for Quotation required if fee is over \$100,000. EDPA required for construction.

- Acronyms:
 UCM: University of California, Merced
 FM: Facilities Management
 AP: Administrative Professional
 NTP: Notice to Proceed
 TCO: Temporary Certification of Occupancy
 NOC: Notice of Completion
 R&A: Renovations and Alternation
 PPG: Project Planning Guide
 CIB: Capital Improvement Program Budget
 CEQA: California Environmental Quality Act
 EIS/EIR: Environmental Impact Statement / Environmental Impact Report
 LRDP: Long Range Development Plan
 EIC: Environmental Impact Classification
 DSA: Division of State Architect
 BAR: Business Agreement Request From
 QA: Quality Assurance
 MOU: Memorandum of Understanding
 PSA: Professional Services Agreement
 EDPA: Executive Design Professional Agreement
 FAU: Full Accounting Unit
 O&M: Operations and Maintenance
 OMP: Operation and Maintenance of Plant (Funding)



NOTES