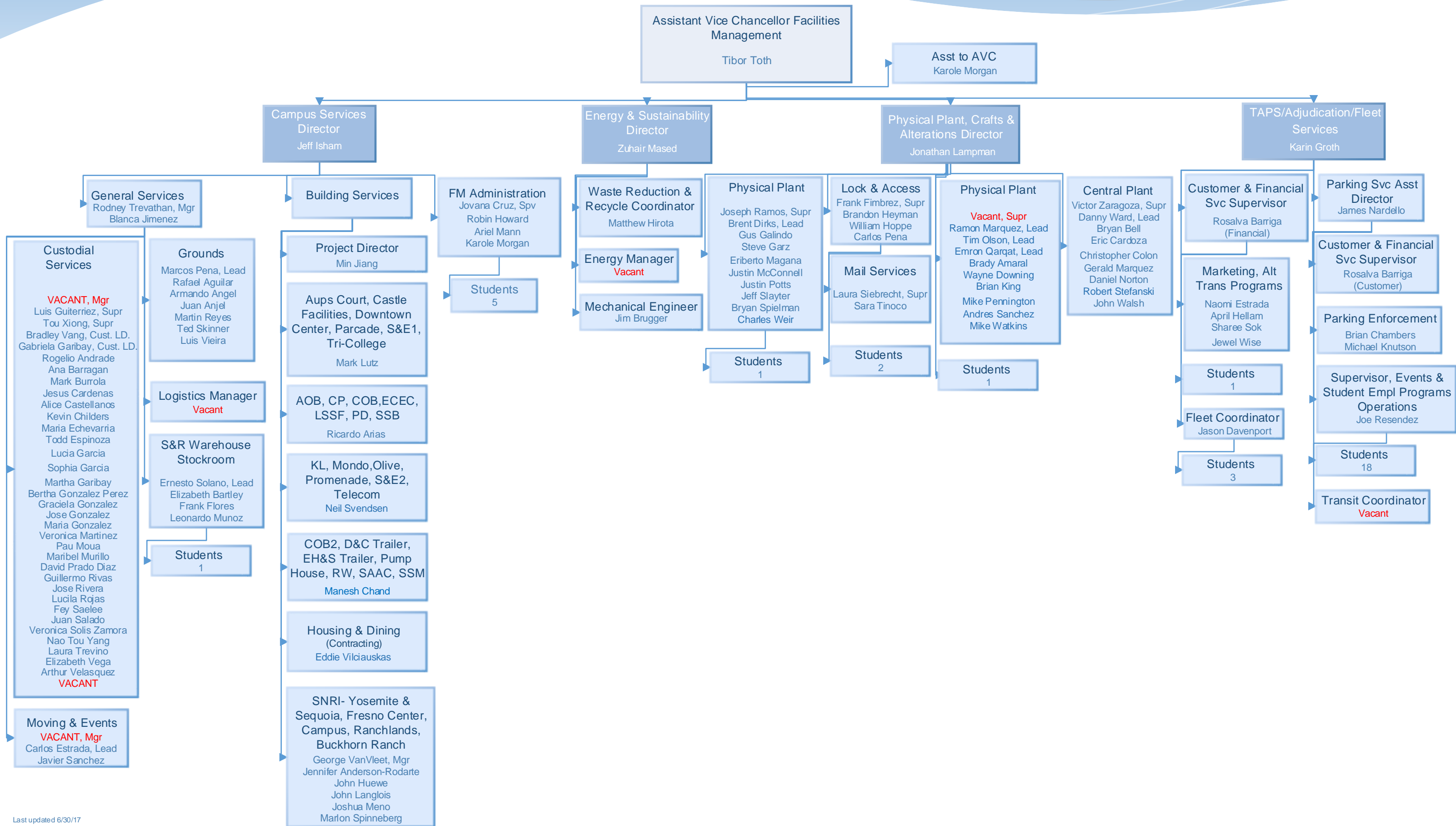
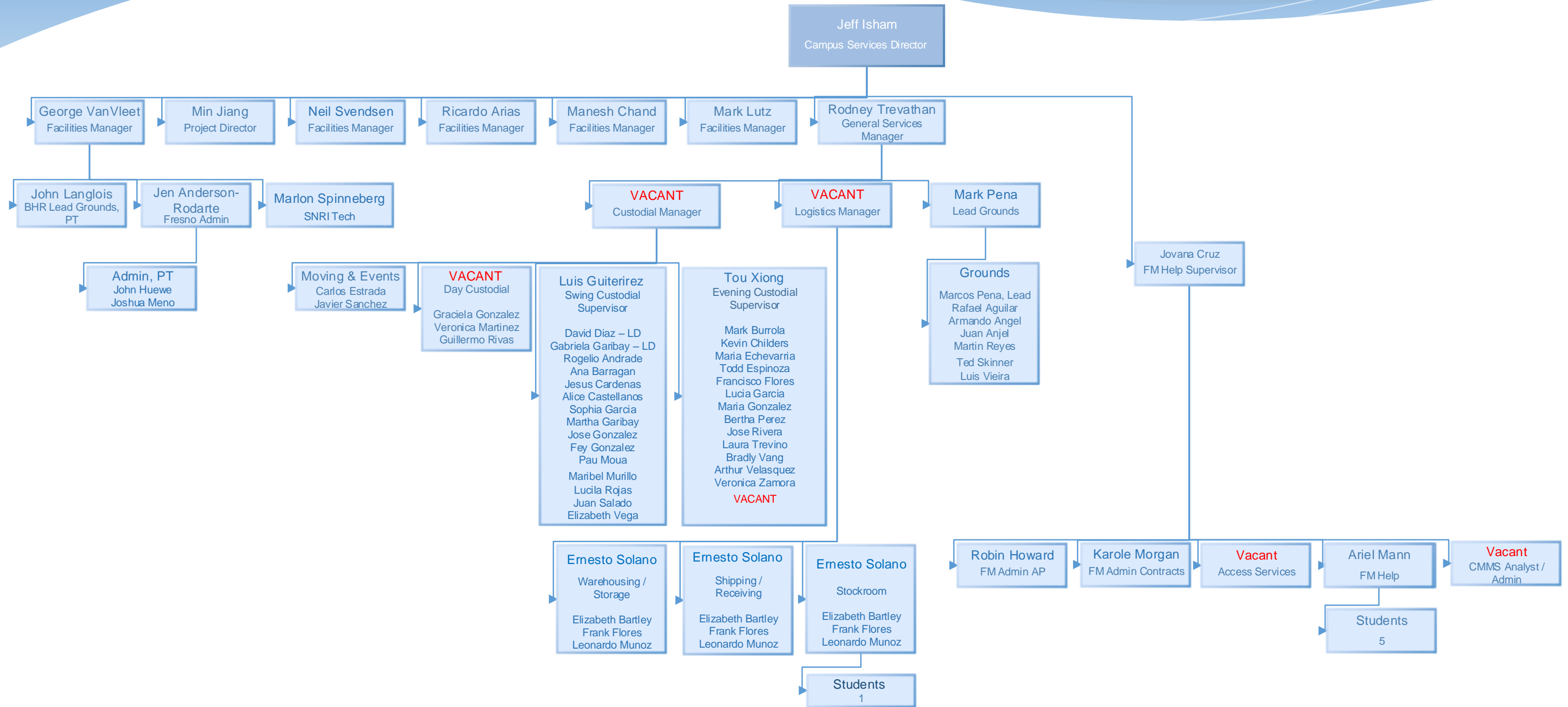


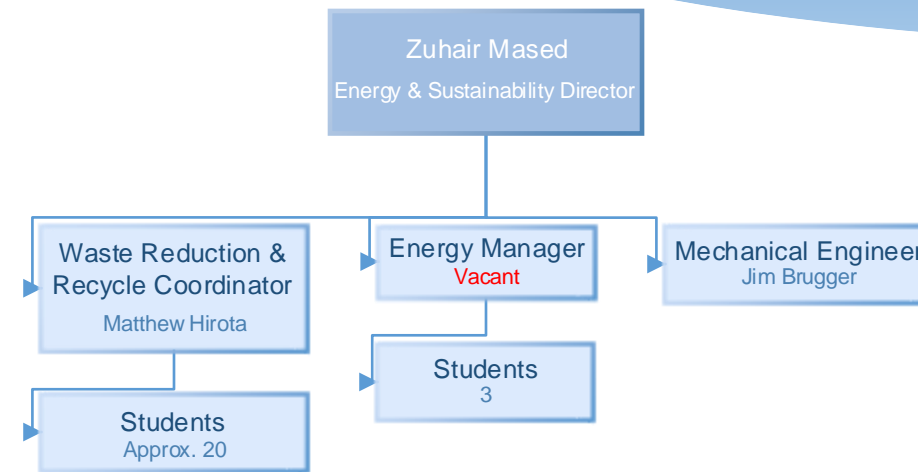
Organizational Chart Facilities Operations



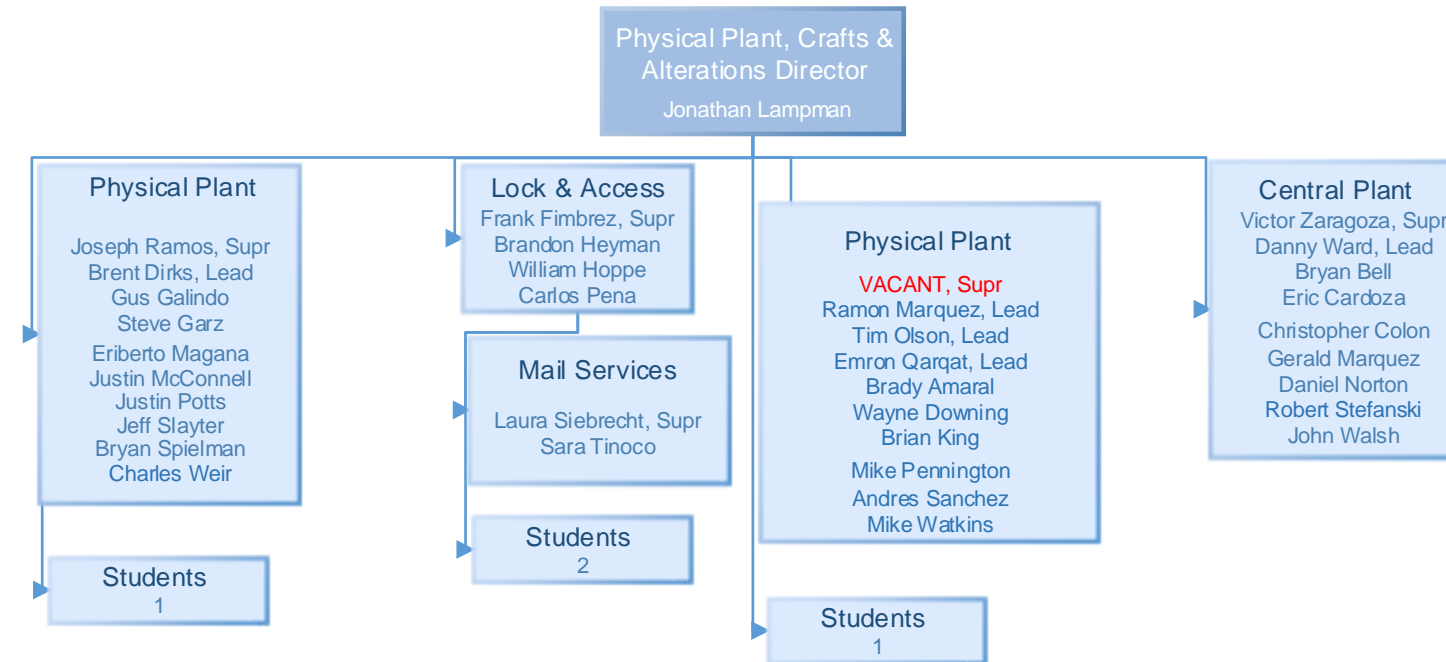
Organizational Chart Campus Services



Organizational Chart Energy & Sustainability



Organizational Chart Physical Plant, Crafts & Alterations



| Name | Working Title |
|-------------------|--|
| Tibor Toth | Assistant Vice Chancellor, Facilities Management (FM) |
| Karole Morgan | Administrative Assistant to - Asst Vice Chancellor, FM |
| Jeff Isham | Campus Services Director |
| Zuhair Mased | Director, Energy & Sustainability |
| Matthew Hirota | Waste Reduction/Recycle Coordinator |
| VACANT | Campus Energy Manager |
| Jim Brugger | Sr. Engineer |
| Jonathan Lampman | Director of Physical Plant, Crafts and Alterations |
| Joseph Ramos | Superintendent, Service Request |
| Jeff Slayter | Plumber I |
| Eriberto Magana | HVAC II |
| Justin Potts | HVAC Technician |
| Charles Weir | HVAC Mechanic |
| Brent Dirks | HVAC Mechanic, Lead |
| Bryan Spielman | Plumber II |
| Justin McConnell | Maintenance Mechanic II |
| Steve Garz | Physical Plant Mechanic |
| Gus Galindo | Maintenance Mechanic II |
| Frank Fimbrez | Supervising Locksmith |
| William Hoppe | Locksmith II |
| Brandon Heyman | Locksmith II |
| Carlos Pena | Locksmith |
| VACANT | Facilities Superintendent |
| Tim Olson | Electrician, Lead |
| Mike Watkins | Electrician II |
| Mike Pennington | Maintenance Mechanic II |
| Brian King | Electrician |
| Wayne Downing | Electrician II |
| Ramon Marquez | HVAC Mechanic, Lead |
| Andres Sanchez | HVAC II |
| John Walsh | Electrician II |
| Emron Qarqat | Water Distribution Tech., Lead |
| Brady Amaral | Water Distribution Mechanic I |
| Victor Zaragoza | Central Plant Supervisor |
| Bryan Bell | Plant Operator |
| Gerald Marquez | Stationary Engineer |
| Danny Ward | Stationary Engineer, Lead |
| Robert Stefanski | Stationary Engineer |
| Eric Cardoza | Plant Operator |
| Daniel Norton | STY ENGR |
| Christopher Colon | Electrician II |
| Karin Groth | Director |
| Sharee Sok | Administrative Assistant III |
| April Hellam | Administrative Assistant III |
| Naomi Estrada | Administrative Asst 1 |

| | |
|-------------------------------------|--|
| Jewel Wise | Administrative Asst 1 |
| Jason Davenport | Fleet Services |
| Vacant - Transit Coordinator | |
| James Nardello | Assistant Director |
| Joe Resendez | Events & Student Employment Program Supervisor |
| Rosalva Barriga | Customer & Financial Services Supervisor |
| Brian Chambers | Parking Representative |
| Michael Knutson | Parking Representative |
| Rodney Trevathan | Manager, General Services |
| Blanca Jimenez | Customer Service Representative |
| VACANT | Manager Custodial Services |
| Luis Guitierrez | Senior Custodial Supervisor |
| Tou Xiong - Supr | Custodial Supervisor 2 |
| David Prado Diaz | Custodian, Lead |
| Jesus Cardenas | Senior Custodian |
| Todd Espinoza | Senior Custodian |
| Graciela Gonzalez | Senior Custodian |
| Veronica Martinez | Senior Custodian |
| Jose Gonzalez | Senior Custodian |
| Fey Saelee | Senior Custodian |
| Veronica Solis Zamora | Custodial Sr. |
| Guillermo Rivas | Senior Custodian |
| Alice Castellanos | Senior Custodian |
| Bradley Vang | Custodian Lead |
| Pau Moua | Senior Custodian |
| Rogelio Andrade | Senior Custodian |
| Nao Tou Yang | Senior Custodian |
| Jose Rivera | Senior Custodian |
| Ana Barragan | Senior Custodian |
| Gabriela Garibay | Custodian LD |
| Lucila Rojas | Senior Custodian |
| Sophia Garcia | Sr. Custodian |
| Elizabeth Vega | Sr. Custodian |
| Juan Salado | Sr. Custodian |
| Maria Gonzalez-Zamudio | Custodian, Sr. |
| Martha Garibay | Custodian, Sr. |
| Kevin Childers | Sr. Custodian |
| Bertha Gonzalez Perez | Sr. Custodian |
| Mark Burrola | Custodian, Sr. |
| Arthur Velasques | SR. CUSTODIAN |
| Laura Trevino | SR. CUSTODIAN |
| Maria Echevarria | SR. CUSTODIAN |
| Lucia Garcia | SR. CUSTODIAN |
| VACANT | SR. CUSTODIAN |
| Maribel Murillo | Custodian, Sr. |
| Carlos Estrada | Laborer, SR LD |
| Javier Sanchez | LABORER |

| | |
|----------------------------|---------------------------------|
| Marcos Pena | Lead Groundskeeper |
| Juan Anjel | Groundskeeper |
| Luis Vieira | Senior Custodian |
| Rafael Aguilar | Groundskeeper |
| Martin Reyes | Groundskeeper |
| Armando Angel | Groundskeeper |
| Ted Skinner | Groundskeeper |
| Vacant - Logistics Manager | |
| Ernesto Solano | LEAD STOREKEEPER |
| Elizabeth Bartley | Administrative Ast 1 |
| Frank Flores | Stores Worker |
| Leonardo Munoz | Stores Worker |
| Laura Siebrecht | Mail & Copy Services Supervisor |
| Sara Tinoco | Senior Mail Processor |
| Mark Lutz | Building Services Manager |
| Ricardo Arias | Building Services Manager |
| Neil Svendsen | Building Services Manager |
| Manesh Chand | Building Services Manager |
| Eddie Vilciauskas | Building Services Manager |
| George VanVleet | Building Services Manager |
| Jennifer Anderson-Rodarte | Administrative Assistant II |
| John Langlois | Lead Groundskeeper |
| Joshua Meno | Clerk |
| John Huewe | Clerk |
| Jovana Cruz | System Administrator |
| Ariel Mann | FMHelp Desk Dispatcher |
| Min Jiang | Project Director |
| Robin Howard | Administrative Specialist |

HR Title

Updated 6/30/17

Facilities Manager 3
Blank Asst 3
Facilities Manager 2
FAC Project Mgt Spec 4
FAC Mgt Spec 3
FAC Project Mgt Spec 3
Structural Engr 3
FAC Mgr 2
Skld Crafts and Trades Supv 2
Plumber 2
HVAC 2
HVAC 2
HVAC 2
HVAC Mechanic lead
Plumber 2
Maint Mech 2
Carpenter 2
Maint Mech 2
Skld Crafts and Trades Supv 2
Locksmith 2
Locksmith 2
Locksmith 2
Skld Crafts and Trades Mgr 1
Electrician Lead MC
Electrician 2
Maint Mech 2
Electrician 2
Electrician 2
HVAC Mechanic lead
HVAC 2
Electrician 2
Water Distribution Mechanic Lead
Water Distribution Mechanic 1
Skld Crafts and Trades Mgr 1
Stationary Engineer
Stationary Engineer
Stationary Engineer lead
Stationary Engineer
Stationary Engineer
Stationary Engineer
Stationary Engineer
Electrician 2
Admin MGR 1
Blank Asst 3
Blank Asst 3
Blank Asst 1

Blank Asst 1
Admin Officer 3

Parking OPS Enforcement Supv 1
Parking OPS Enforcement Supv 1
Financial Services Supv 1
Parking Repr
Parking Repr
Facilities Manager 1

Blank Asst 1
Custodial Mgr 1

Custodial Supv 2
Custodian Lead
Custodian Lead
Custodian SR
Custodian SR
Custodian SR
Custodian SR
Custodian SR
Custodian SR
Custodian SR
Custodian SR
Custodian SR
Custodian SR
Custodian SR
Custodian SR
Custodian SR
Custodian SR
Custodian SR
Custodian SR
Custodian SR
Custodian SR
Custodian SR
Custodian SR
Custodian SR
Custodian SR
Custodian SR
Custodian SR
Custodian SR
Custodian SR
Custodian SR
Custodian SR
Custodian SR
Custodian SR
Custodian SR
Custodian SR
CUSTODIAN SR
Custodian SR
CUSTODIAN SR
Custodian SR
Laborer SR Lead
Laborer

Groundskeeper Lead
Groundskeeper
Groundskeeper
Groundskeeper
Groundskeeper
Groundskeeper
Groundskeeper

Storekeeper Lead
Blank Asst 1
Stores Worker
Stores Worker
Mail Services Supv 1
Mail Processor
Admin Stipend Ex
FAC Mgt Spec 3
FAC Mgt Spec 3
FAC Mgt Spec 3
FAC Manager 1
FAC Mgt Spec 4
Blank Asst 2
Lead Groundskeeper
Clerk
Clerk
Admin Supv 2
Blank Asst 3

Admin Officer 2