



UCMERCED FACILITIES MANAGEMENT

MINOR CAPITAL PROJECT WORKFLOW

UC Facilities Manual References

Minor Capital Project:

- Under \$35,000: No R&A Form Requirement
- \$35,000-below \$1,000,000: R&A Form Requirement (Including EIC & Project Schedule)

Major Capital Project:

- Above \$1,000,000: PPG Form Requirement (Including CIB, CEQA / EIS / EIR / EIC, Project Schedule, & Pro Forma)

Bidding and Construction Contract:

- Negotiated Contract: \$50,000 or less
- Informal Bidding without Prequalification: \$50,001-\$300,000
- Informal Bidding with Prequalification: \$300,000-\$640,000
- Formal Bidding: Over \$640,000

- Construction Contract Forms: Long Form (Must Be Used in Formal Bidding), Mini Form / Brief form

Builder's Risk Insurance Goes By Construction Cost:

- Under \$200,000: Contractor's Builder's Risk
- \$200,000 or Over: UC Mandated Builder's Risk
- Current UC Builder's Risk: Willis Towers Watson

Bonding Requirements:

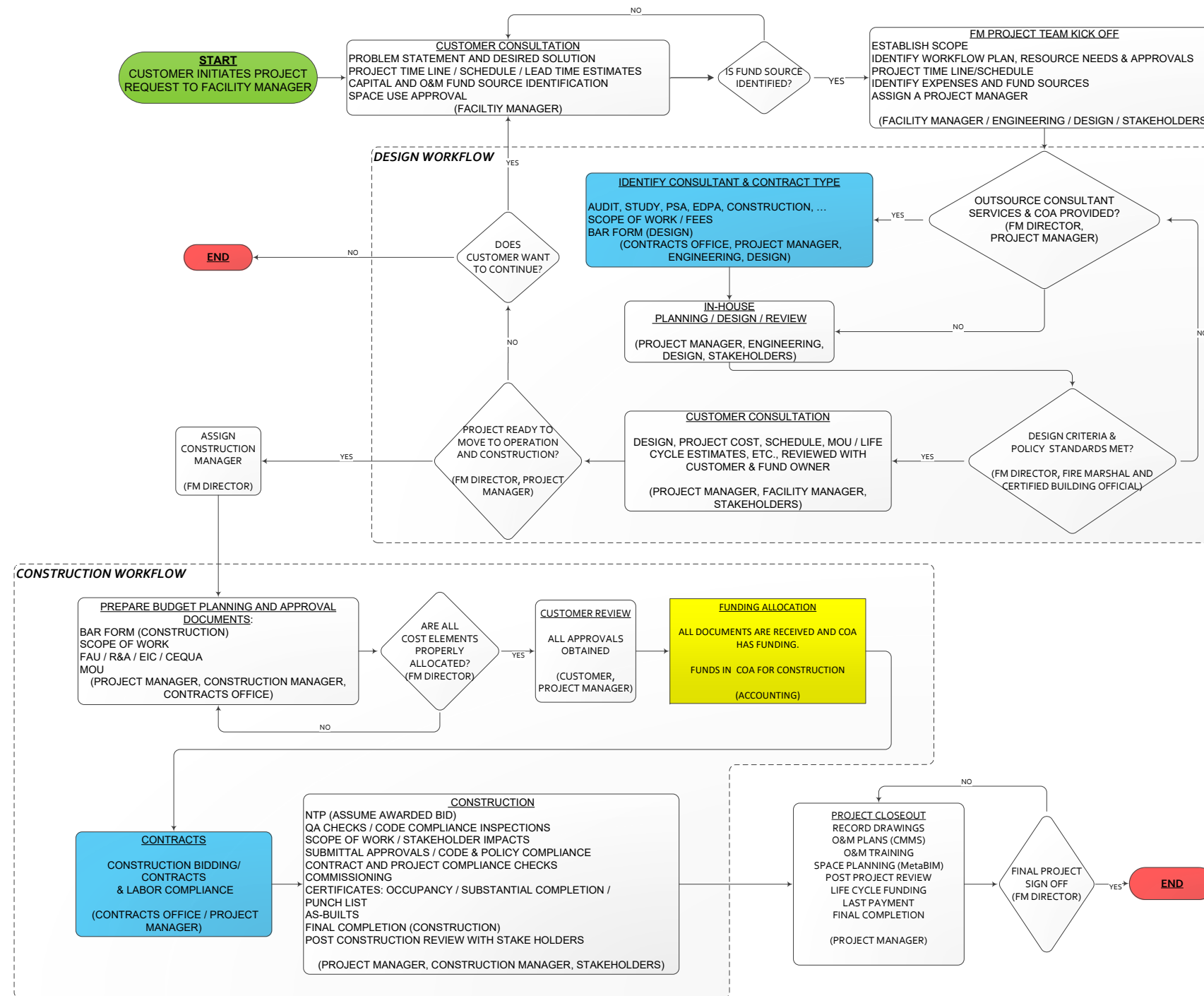
- Payment Bond; projects over \$25,000
- Performance Bond; projects over \$50,000
- Bid Bond; projects over \$640,000

Design Agreements:

- PSA: Professional Service Agreement
- EDPA: Executive Design Professional Agreement; Request for Quotation required if fee is over \$100,000. EDPA required for construction.

Acronyms:

- UCM: University of California, Merced
- FM: Facilities Management
- AP: Administrative Professional
- NTP: Notice to Proceed
- TCO: Temporary Certification of Occupancy
- NOC: Notice of Completion
- R&A: Renovations and Alternation
- PPG: Project Planning Guide
- CIB: Capital Improvement Program Budget
- CEQUA: California Environmental Quality Act
- EIS/EIR: Environmental Impact Statement / Environmental Impact Report
- LRDP: Long Range Development Plan
- EIC: Environmental Impact Classification
- DSA: Division of State Architect
- BAR: Business Agreement Request From
- QA: Quality Assurance
- MOU: Memorandum of Understanding
- OSFM: Fire Marshal
- PSA: Professional Services Agreement
- EDPA: Executive Design Professional Agreement
- COA: Chart of Accounts
- O&M: Operations and Maintenance
- OMP: Operation and Maintenance of Plant (Funding)
- CBO: Certified Building Official



NOTES